

MultiDoc-It™ Imaging System

Installation and User Instructions



UVP, LLC

2066 W. 11th Street
Upland, CA 91786
Phone: (800) 452-6788 / (909) 946-3197
Fax: (909) 946-3597

Web Site: www.uvp.com

Ultra-Violet Products Ltd.

Unit 1, Trinity Hall Farm Estate
Nuffield Road, Cambridge CB4 1TG UK
Phone: +44(0)1223-420022
Fax: +44(0)1223-420561

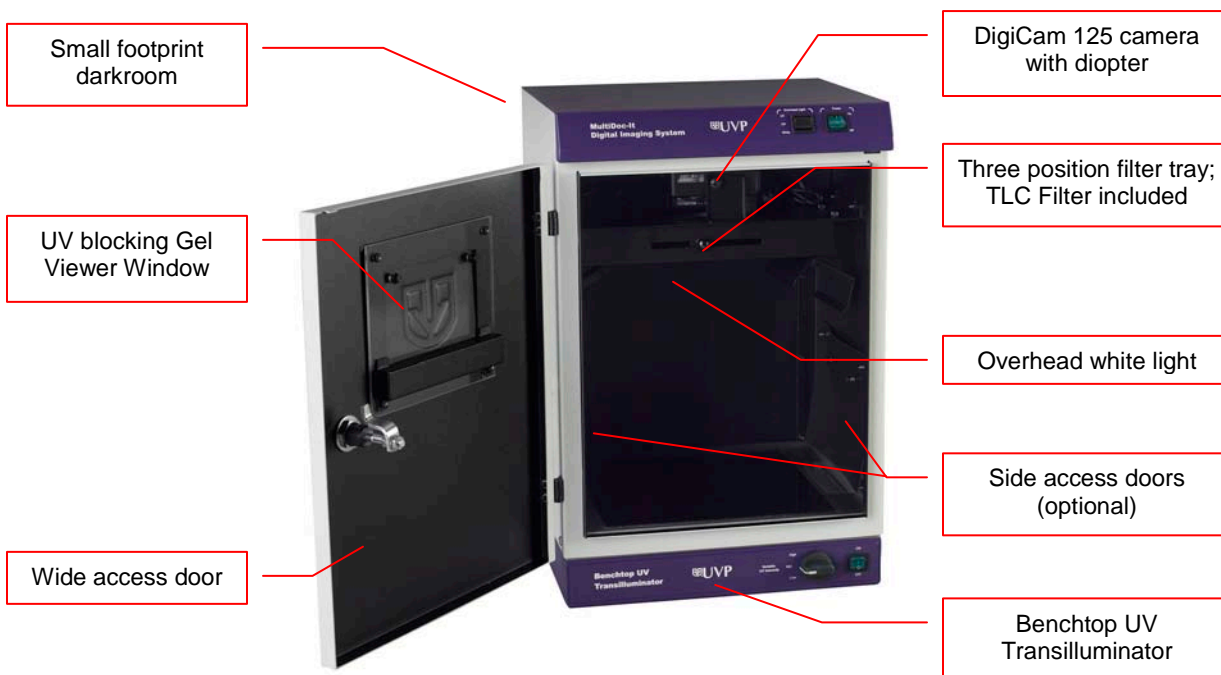
81-0214-01 Rev J

Introduction

The MultiDoc-It Imaging System is a high resolution imager capable of capturing and documenting fluorescent gel images. The system combines:

1. MultiDoc-It Darkroom
2. DigiCam 125 digital color camera
3. Ethidium Bromide (EtBr) Filter
4. Doc-It[®]LS Acquisition Software (refer to software manual for installation)
5. UV transilluminator. Transilluminator instructions are provided in a separate manual.

NOTE: MultiDoc-It TLC Systems (for Thin Layer Chromatography) do not include a transilluminator.



Darkroom

The MultiDoc-It darkroom provides a dark environment for gel UV illumination and protects the DigiCam 125 camera. Some MultiDoc-It models include side access doors for moving or cutting gels without opening the front door.

UV Filter

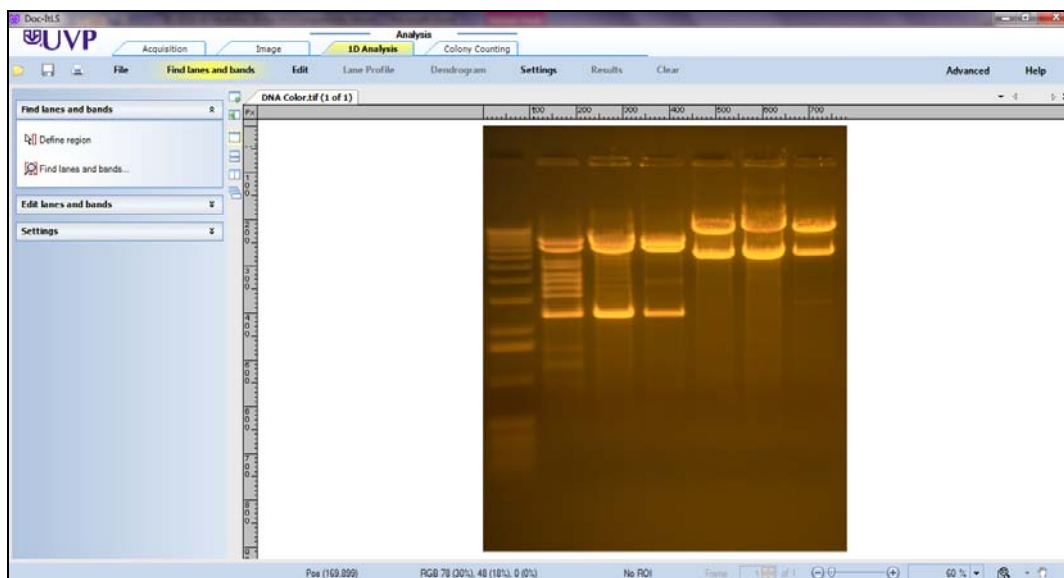
The included emission filter, an orange-colored UV blocking bandpass filter, is used to absorb UV and IR radiation from the transilluminator and to enhance the orange/pink bands generated by Ethidium Bromide stained gels. The filter can be removed when imaging non-fluorescent media (protein gels, colony plates, etc.) in order to produce brighter images.

Camera and Diopter

The digital color camera (DigiCam 125) includes a built-in optical zoom lens. A close-up diopter is connected to the lens at the UVP factory.

Doc-ItLS Software

The Doc-ItLS software loads onto the user's existing computer. The software controls the camera acquisition functions as well as enhancement and reporting features. For information on installation and use of the software, refer to the Doc-ItLS software help files.



Doc-ItLS Acquisition Software

UV Transilluminator

A UV transilluminator may be shipped with the system. The transilluminator includes an ultraviolet blocking cover and the cover should be removed when the transilluminator is used with the system. Refer to the Transilluminator manual for separate instructions.

Operating System Requirements

- Windows 7, Vista or XP SP2 or later
- Internet Explorer 6.0 or higher [To locate the version of Internet Explorer, open Internet Explorer and click on **Help->About Internet Explorer**]
- Intel Pentium Processor or equivalent, 1.6 GHz or higher
- 1 GB of RAM or greater
- 200 MB of available hard disk space for the program, more for data
- CD-ROM drive
- One Universal Serial Bus (USB) for connecting the camera
- Color monitor, supporting at least 1024 x 768 resolution and 16-bit or better colors; 24-bit or 32-bit color is strongly recommended

NOTE: For 21 CFR Part 11 support functionality, the computer partition must be formatted with NTFS. Refer to the Doc-ItLS software manual for instructions.

System Setup

DO NOT ATTEMPT TO CONNECT ANY WIRING WHILE THE EQUIPMENT IS CONNECTED TO A POWER SUPPLY.

CAUTION: Do not install the system in places with high moisture, dust or high temperature. Do not use any oil or petroleum based cleaner for the cabinet. Use only mild soap or detergent solution for cleaning. Ensure that the system is turned OFF during cleaning. Keep the equipment away from motors or other large magnetic equipment apparatus.

Power Connections

1. On the rear of the transilluminator, attach one end of the jumper cord into the transilluminator and other end of the jumper cord to back of the darkroom.
2. Attach the main power cord to the top-rear of the darkroom and the other end of the main power cord into an outlet (a surge suppressor is recommended).

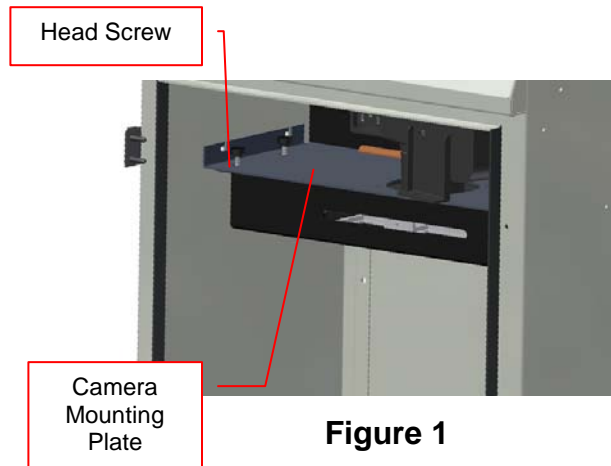


Figure 1

Filter Installation

1. Unscrew the four plastic head screws (Fig. 1) that holds the filter tray to the camera mounting plate.
2. Remove the filter tray from its position and place the filter(s) in the square recessed areas (Fig. 2).
3. Fasten the filter tray to the camera mounting plate with the four plastic head screws (Fig. 1).

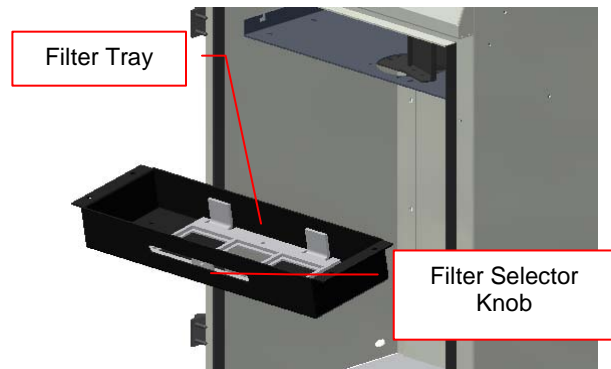


Figure 2

Connecting the Optional UV Lamps

1. Insert a lamp into each bracket (Fig. 3) so that the cord is directed to the back of the darkroom.
2. Run the cord behind the camera mounting plate (shown in Fig. 1) and plug into the lamp outlet.

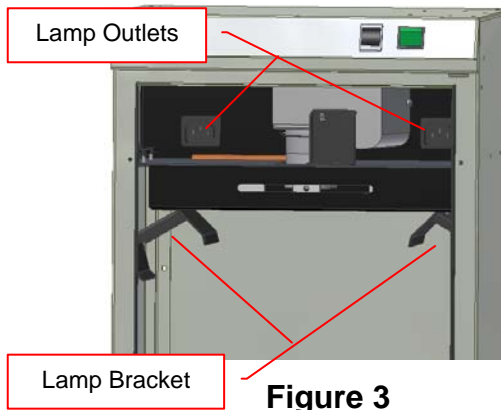


Figure 3

CAUTION: All UVP Transilluminators are powerful sources of UV radiation that will cause damage to unprotected eyes and skin. Before operating any unit, be sure all personnel in the area are properly protected. UV Blocking Eyewear should be worn as well. Refer to Accessories for UV Blocking Eyewear.

Install the Doc-ItLS Software

NOTE: The following provides a brief instruction for installing the software. For additional instruction on using the software, refer to the Doc-ItLS help files.

1. Insert the CD into the CD-ROM drive. The installation program should automatically start. If the installation program fails to start, navigate to the CD-ROM drive and double-click **setup.exe** to launch Doc-It.
2. Follow instructions from the Wizard screens as they appear, clicking **Next**, **Accept** or **Finish** as appropriate.
3. If prompted to restart the computer, click **No**.
4. Restart the computer by choosing **Restart** from the Windows Start menu.
5. Double click onto the UVP icon on the desktop.
6. Activate the software by choosing **On the fly activation** if connected to the internet. Complete all the required information on the form and fill in the Serial Number (located on the CD). Click onto **Get Activation No.** and then click onto **Activate** when the Activation Number appears in the box.
7. Close the software.

NOTE: If not connected to the Internet, call technical services at (800) 452-6788 or (909) 946-3197 to complete the activation process.

Connect the Camera to the Computer

NOTE: It is recommended to only connect the camera to the computer while the camera is off.

1. Connect the USB cable from the camera to the computer.
2. Turn the camera on and select **A-DEP** on the camera dial.

NOTE: Do not use the Doc-ItLS software while the camera dial is set to movie mode as doing so may result in an error.



Camera set to A-DEP

Connect to Doc-ItLS Software

1. Open the Doc-ItLS software. The software should automatically identify the camera. The camera control window should be active and ready to capture images.

System Operation

Darkroom Operation

1. Turn the darkroom main power switch on. The main power switch controls the automatic transilluminator shut off switch and the white light power.
2. To use the transilluminator, once the main power switch is on, turn the transilluminator switch on. If the door is open, the transilluminator automatically shuts off.
3. To use the overhead white light, switch the **Overhead Light** button to **White**.

Loading Gels into the Darkroom

Slides are loaded into the MultiDoc-It darkroom through the front access door.

1. Turn **Off** the UV Transilluminator.
2. Open the darkroom door.
3. Place the sample to be imaged in the center of the transilluminator filter glass.
4. Close the darkroom door.
5. Turn **On** the transilluminator.

Note: It is important to minimize the light source exposure to the sample. Turn off the light source as soon as the image is captured.

View a Sample Prior to Capture

Slides may be viewed through the Gel Viewport Window when the door is closed.

1. Open the Viewport Window on the darkroom door.
2. After visual checking that the sample is loaded correctly, close the viewport. Otherwise, light from the viewport will interfere with the capturing process.

Move or Cut a Sample

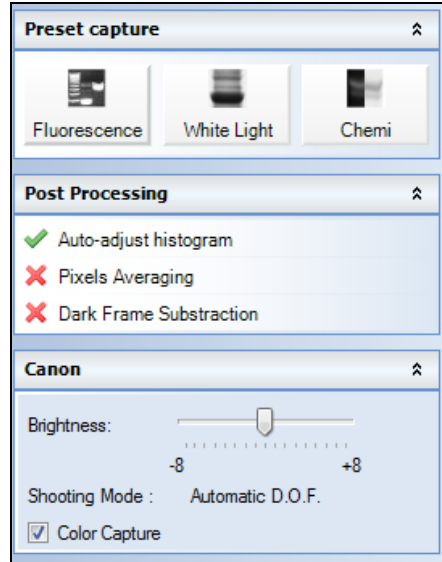
It is possible to cut or move the sample by using the side access doors on the darkroom.

1. Open the darkroom door and place the sample on the transilluminator.
2. Close the door and turn the transilluminator on.
3. Open the Viewport Window on the darkroom door.
4. Open the side access door(s) and move or cut the gel while viewing the sample through the viewing window.

Software Operation

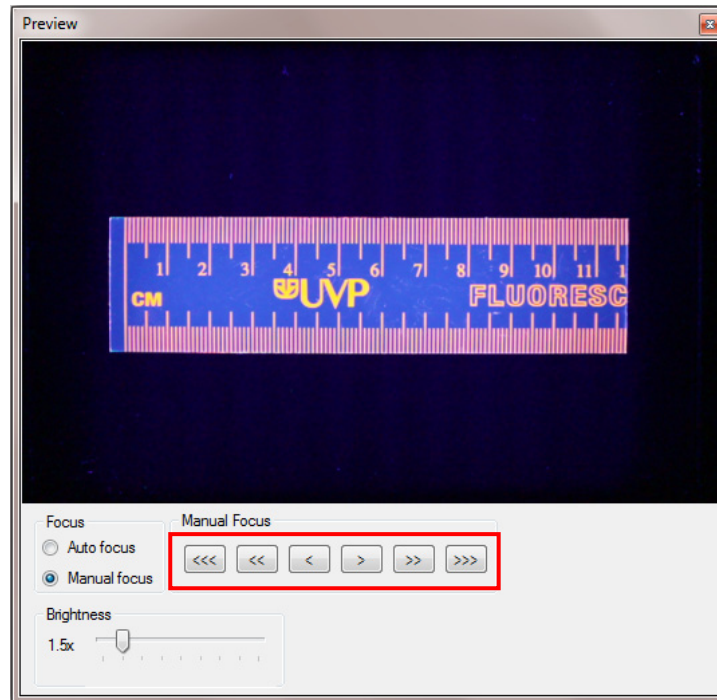
NOTE: Do not use the Doc-It software while the camera dial is set to movie mode, as doing so may result in an error.

1. Ensure that the camera mode is set to A-DEP for automated capture.
2. Open the Doc-ItLS software.
3. A window displaying the camera options should appear as pictured below. If not, click on the Acquisition Action tab and then on the Camera menu button.



Camera Control Window

4. To take images in color, ensure that the **Color Capture** box is checked.
5. Select **Preview** at the top of the software to preview the image.
6. While in preview mode, the **Brightness** slider can be adjusted to brighten dark images.
7. The user may adjust the focus manually to enhance the appearance of the previewed image. Click the **Manual focus** radio button on the Preview window, then use the left and right arrows (shown in the red box, below) to adjust the focus settings.



Preview Window with Manual Focus

8. When satisfied with the previewed image, select **Capture** at the top of the software.

Optional Camera Setup (Image Acquisition)

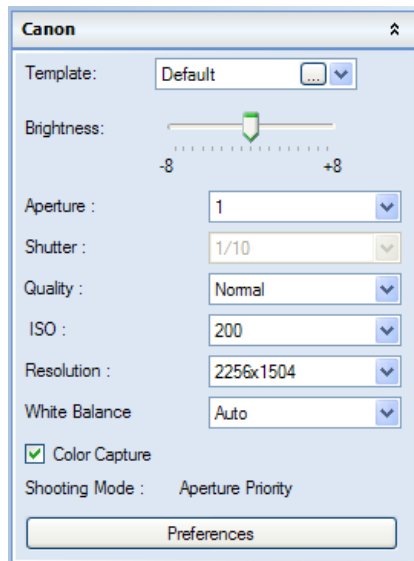
If operating the camera in automatic mode is not sufficient for the application, try utilizing the manual mode to gain additional camera control.

1. Access the camera and turn the camera dial to **M**, the next position on the dial. (The dial is preset to **A-DEP** and will only turn in one direction.)



Set camera to M

2. A new camera window appears with additional options:



Camera Control in Manual Mode

3. Select the desired options for an enhanced image. See the camera manual for detailed descriptions of options.
4. Select **Capture** at the top of the software.

Overhead UV Lamps (Purchased Separately)

1. Move the UV lamp power switch to the ON position.
2. Slide the UV Lamps into the lamp brackets inside the darkroom. Be sure the lamp power cords are positioned towards the outlets located on back inside of the darkroom.
3. Run the lamp power cords over the camera mounting plate and plug into the outlets.
4. To use the lamps, the darkroom main power switch must to be to the **ON** position and the overhead light switched to **UV**. **NOTE:** The UV Lamps do not receive power until the MultiDoc-It door is closed.

Service Procedures

Return Procedure

A **Returned Goods Authorization (RGA)** number must be obtained from UVP Customer Service before returning any product.

Replacement Parts and Accessories

Accessories are available for use with the MultiDoc-It Imaging Systems. Contact UVP's offices at the telephone numbers below for replacement parts for MultiDoc-It equipment. For transilluminator replacement parts, refer to the separate transilluminator manual.

| Description | Part Numbers |
|---|--------------|
| UV Lamps: | |
| UVG-11, 254nm UV, 115V | 95-0016-14 |
| UVG-11, 254nm UV, 230V | 95-0016-15 |
| UVGL-15, 365/254nm, 115V | 95-0017-09 |
| UVGL-15, 365/254nm, 230V | 95-0017-10 |
| UVL-21, 365nm, 115V | 95-0018-02 |
| UVL-21, 365nm, 230V | 95-0018-03 |
| UVGL-25, 365/254nm, 115V | 95-0021-12 |
| UVGL-25, 365/254nm, 230V | 95-0021-10 |
| UV to 480nm Filter Converter | 76-0310-01 |
| Doc-ItLS Analysis Software | 97-0185-02 |
| Thermal Printer, Mitsubishi Digital (115/230V) | 89-0069-06 |
| Thermal Printer, Mitsubishi Digital (230V) | 89-0069-07 |
| Thermal Printer, Sony Digital (230V for Europe) | 98-0357-01 |
| Thermal Paper, matte 4 rolls (800 images) | 89-0038-01 |
| Thermal paper, 16 rolls (3200 images) | 89-0038-04 |
| Thermal Paper, 40 rolls (8000 images) | 89-0038-05 |
| UV to White Light Converter Plate (21x26cm) | 38-0191-01 |
| UV to White Light Converter Plate (20x40cm) | 38-0191-02 |
| Visi-Blue Converter Plate (21x26cm) | 38-0200-01 |
| Visi-Blue Converter Plate (20x40cm) | 38-0200-02 |
| Filter, 50mm, sq., SYBR Green and EGFP | 38-0219-01 |
| Filter, 50mm, sq., Ethidium Bromide | 38-0220-01 |
| Fuse, 2 Amp, 250 V (Qty. 2) | 56-0002-01 |
| Fuse Cap (Qty. 2) | 56-0036-01 |

Troubleshooting

No Power to the Darkroom

Recheck the main power cord connections to the darkroom. Check fuses, located at the back of the unit, near the power port. Using a flat-head screwdriver, turn the cap and the fuse holder will "pop-out". Inspect the thin wire within the glass fuse to see if there is a break in the wire. If so, replace fuse(s). If fuses are blown repeatedly, contact UVP Technical Support Department for additional troubleshooting.

Transilluminator Will Not Turn On

Be sure the darkroom cabinet's door is completely closed. There is a UV exposure safety cut-off switch that turns the transilluminator off when the darkroom cabinet's door is opened.

Be sure the darkroom cabinet's main power switch is lit. If not, refer to "No Power to Darkroom."

The transilluminator itself has a power switch; make sure that the transilluminator switch is in the On position.

Be sure the transilluminator power jumper cord is securely connected at both the ends of the cable. There is a 10-minute timer that turns off the transilluminator automatically after 10-minutes of use. The timer switch located at the front of the darkroom can be reset (which restarts the 10-minute count).

Technical Assistance

UVP offers technical support on all of its products. If there are questions about the product's use, operation or repair, please contact our offices at the locations below, or go to UVP's web site and click the Tech Support > Bioluminescence Imaging Systems.

| | |
|--|---|
| If residing in North America, South America, East Asia or Australia: | If residing in Europe, Africa, the Middle East or Western Asia: |
| Call (800) 452-6788 or (909) 946-3197 , and ask for Customer Service during regular business days, between 7:00 am and 5:00 pm, PST. | Call +44(0) 1223-42002 , and ask for Customer Service during regular business days between 9:00 am and 5:30 pm. |
| E-mail your message to: techsupport@uvp.com | E-mail your message to: uvp@uvp.co.uk |
| Fax Customer Service, and send it to (909) 946-3597 | Fax Customer Service, and send it to: +44(0) 1223-420561 |
| Write to: UVP, LLC 2066 W. 11 th Street, Upland, CA 91786 USA | Write to: Ultra-Violet Products Ltd Unit 1, Trinity Hall Farm Estate, Nuffield Road, Cambridge CB4 1TG UK |

Warranty

UVP's products are guaranteed to be free of defects in materials, workmanship and manufacture for one (1) year from date of purchase. Consumable and disposable parts including, but not limited to tubes and filters, are guaranteed to be free from defects in manufacture and materials for ninety (90) days from date of purchase. Transilluminators carry a two (2) year warranty from date of purchase. If equipment failure or malfunction occurs during the warranty period, UVP shall examine the inoperative equipment and have the option of repairing or replacing any part(s) which, in the judgment of UVP, were originally defective or became so under conditions of normal usage and service.

No warranty shall apply to this instrument, or part thereof, that has been subject to accident, negligence, alteration, abuse or misuse by the end-user. Moreover, UVP makes no warranties whatsoever with respect to parts not supplied by UVP or that have been installed, used and/or serviced other than in strict compliance with instructions appearing in this manual.

In no event shall UVP be responsible to the end-user for any incidental or consequential damages, whether foreseeable or not, including but not limited to property damage, inability to use equipment, lost business, lost profits, or inconvenience arising out of or connected with the use of instruments produced by UVP. Nor is UVP liable or responsible for any personal injuries occurring as a result of the use, installation and/or servicing of equipment.

This warranty does not supersede any statutory rights that may be available in certain countries.